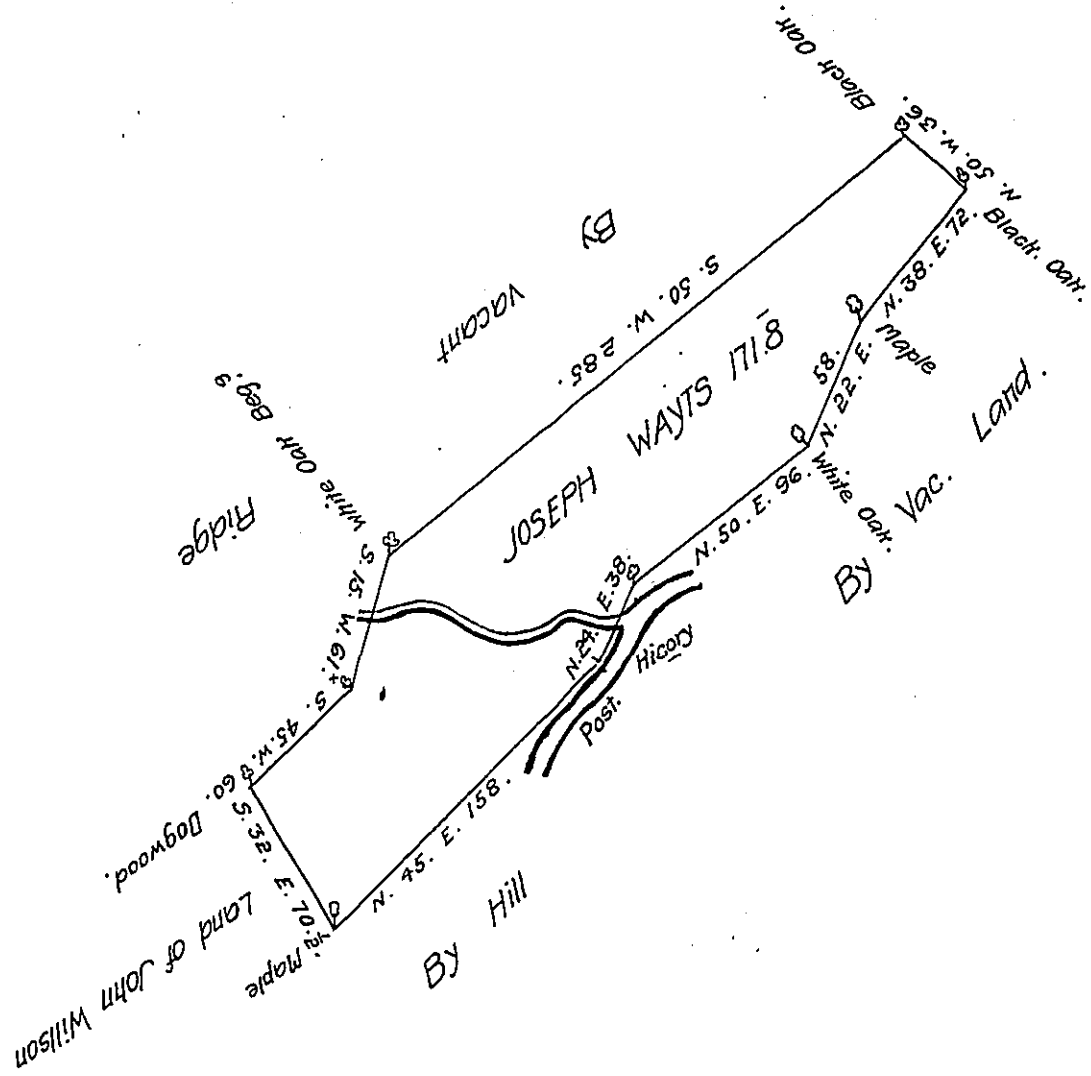


FORM NO 1.



The Draught of a Tract of Land called _____ Situate near the Head of Tuscarora Creek
 in the County of Cumberland containing One Hundred Seventy One Acres 133 Perches with
 the usual Allowance of Six Acres & Cent for Roads. Survey'd the 14th day of May Anno.
 Dom. 1768. In Pursuance of an Order of Survey to Joseph Wayts Bearing Date at Philad^a
 the Twenty second day of June Anno. Dom. 1767. N^o 3947.

P. W^m Maclay D. S.

To John Lukens Esq. S. G.
 of Pennsylvania.

IN TESTIMONY that the above is a copy of the original remaining on file in
 the Department of Internal Affairs of Pennsylvania, made
 conformably to an Act of Assembly approved the 16th day of
 February, 1833, I have hereunto set my Hand and caused
 the Seal of said Department to be affixed at Harrisburg,
 this first day of July 1908.

Harry Houck
 Secretary of Internal Affairs.